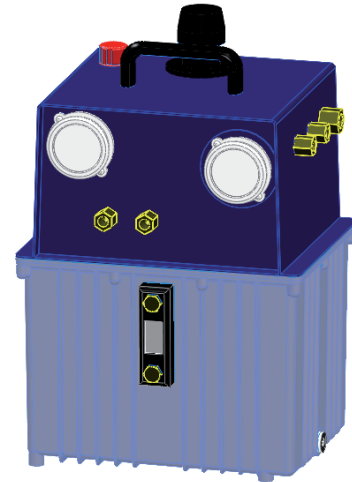


## Operating pressure max. 150 bar/360 bar/600 bar Conversion ratio 1:25/1:60/1:1000

These air hydraulic pumps are designed for various hydraulic applications, especially for intermittent operation. By connecting a 3/2- way or 4/2-way pneumatic valve, the built-in hydraulic valves for stroke and backstroke can be actuated. The pumps are complete, and only have to be connected to the existing compressed air supply.

### Technical characteristics

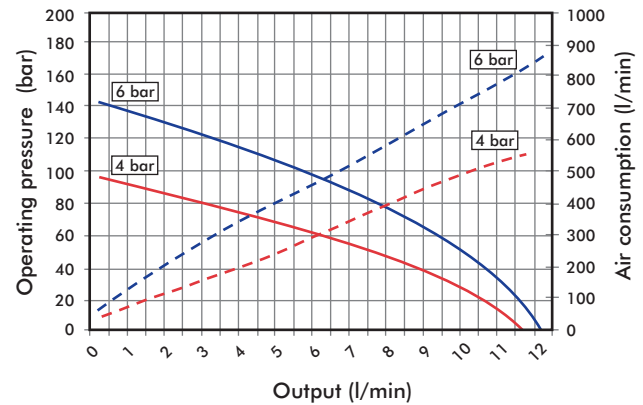
- Double piston pump-therefore pressure build-up almost pulsation free
- Compact pump - low required space
- 3 different conversion ratios available
- integrated back pressure valve prevents pressure loss in the clamping circuit
- In case of a pressure drop > 10 bar within the pressure circuit, the pump automatically restarts to pump oil in order to restore the set pressure



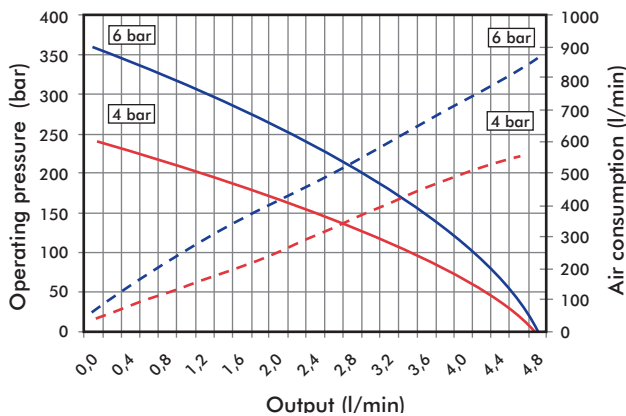
### Recommended accessories (separate order)

- 1 4/2-ways manual-control-valve **800416**
- 1 3/2-way-foot-control-valve **FP-3-1/4-H**
- 2 screw-in connections **CK-1/4-PK6**
- 1 screw-in connections **CK-3/8-PK9**

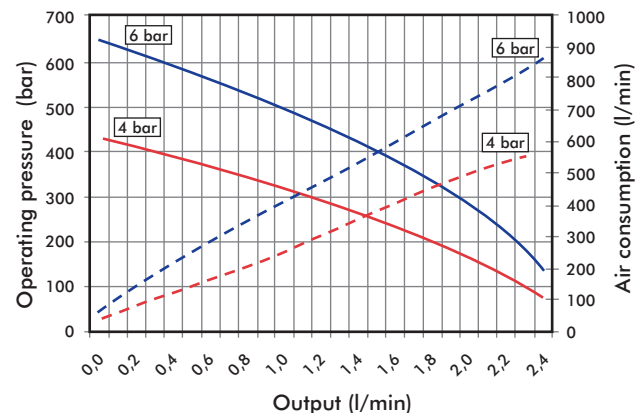
713D/E1505.-1



713D/E3605.-1



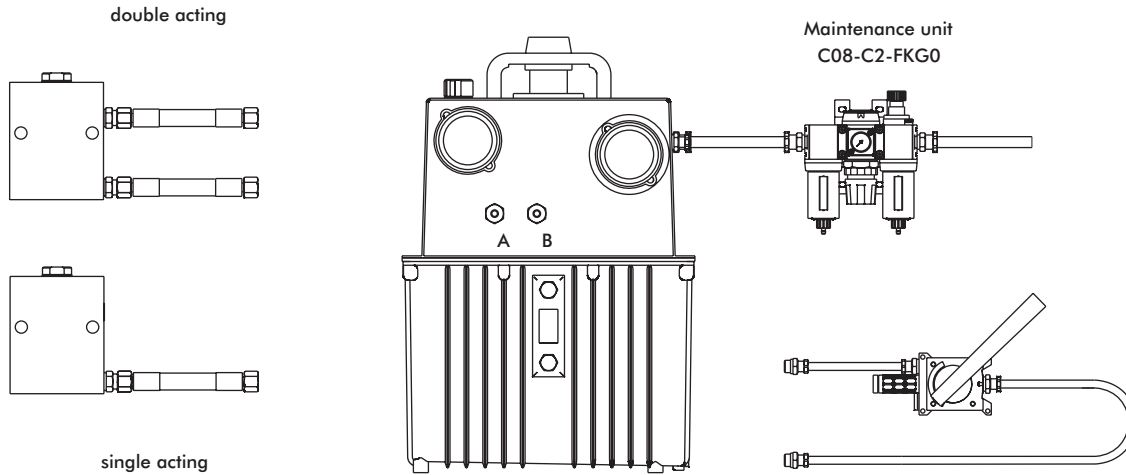
713D/E6005.-1



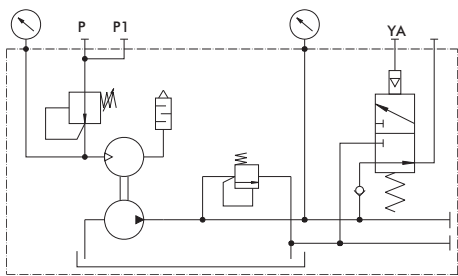
model no.		Ratio	max. operating pressure [bar]	Reservoir oil quantity [l]	usable oil quantity [l]	Air inlet pressure		Connection oil side	Sound level [dB(A)]	Weight [kg]
single acting	double acting					min. [bar]	max [bar]			
<b>713E15051-1</b>		1:25	150	8	5,5	1,5	6	1xG1/4	65	30
	<b>713D15051-1</b>	1:25	150	8	5,5	1,5	6	2xG1/4	65	31
<b>713E36051-1</b>		1:60	360	8	5,5	1,5	6	1xG1/4	65	30
	<b>713D36051-1</b>	1:60	360	8	5,5	1,5	6	2xG1/4	65	31
<b>713E60051-1</b>		1:100	600	8	5,5	1,5	6	1xG1/4	65	30
	<b>713D60051-1</b>	1:100	600	8	5,5	1,5	6	2xG1/4	65	31

**Connection diagram:**

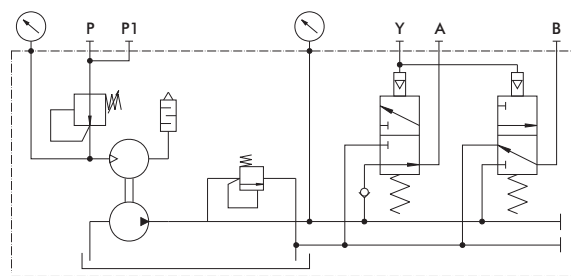
in this connection diagram you can see an air hydraulic pump, double action, with pneumatic control. On a single action design, the connection B does not apply.



**Clamping circuit combinations**



1 clamping circuit\*, single action\*  
713E15051-1, 713E36051-1, 713E60051-1



1 clamping circuit\*, double action\*  
713D15051-1, 713D36051-1, 713D60051-1

\* Pumps with more circuits, with electrically controlled valves, positioning circuit or accumulator control unit circuit are also available.

